



St. John's JULY Parish Visitor



Pastoral Newsletter Article: Pastor Cutler
July, 2026

“Trust in the Lord with all your heart, and do not lean on your own understanding. In all your ways acknowledge him, and he will make straight your paths. (Proverbs 3:5-6)

This was the text that was my brother's confirmation verse. It was also the text that I preached at his funeral. This is a scripture that is important for all of us, because trust is central to our faith.

“In God we trust” is printed on our currency. This is a straight forward message for all of us to follow. So often, we look at our own situations, and we get worried. “When I am afraid, I will trust in you.” (Psalm 56:3) It is precisely at those moments in time when trust is absolutely necessary.

This last month, we experienced a pastor who has been with us for over seven years take a call to another congregation. As we mourn Pastor Frazee's leaving, we also rejoice with the church that a laborer is working in the harvest field for the overall benefit of His kingdom. Some of us may be worried about what will happen.

This will be a key time for us to “trust in the Lord with all of our hearts.” It will be a special time of prayer for our congregation here at St. John's. It will also be a time of reflection on the ministry, and the specific needs of our congregation. Since we trust in the Lord, this will not be a time of worry and stress.

God is guiding our congregation to greatness in ministry in the Mayville community and beyond. He knows all about us and about the harvest field. As we trust in Jesus for our forgiveness and salvation through His blood that He shed upon the cross, so we trust Him for our future as a church.

As I pastor all of you, you will not be neglected in pastoral care. To the best of my ability and in the power of Christ, I will continue to serve you with the ministry of Jesus. The elders will assist me in this ministry.

Pray for me and the ministry of this congregation. God will lead us through this time of ministry. It will be a time of prayer, reflection, and stepping up to serve in Christ's church.

Blessings,

Pastor Mark Cutler

St. John's Church, School, Childcare & Youth Ministries

Website:

www.stjohnsmayville.com

Church & School Office Email:

Pastor Mark Cutler

pastor.cutler@stjohnsmayville.com

Church Secretary

Barb.Haessly@stjohnsmayville.com

Prayer Chain

sjprayerchain@stjohnsmayville.com

School Email:

Doug Mageski, Principal

princpal@stjohnsmayville.com

Doug Mageski, Youth Coordinator

Doug.mageski@stjohnsmayville.com

Brooke Krueger, Adm. Asst.

brooke.krueger@stjohnsmayville.com

Julie Marquardt Office Asst. / Librarian

Julie.marquardt@stjohnsmayville.com

Child Care Email:

Kristy Zahn-Roecker

Childcare Coordinator / 3K

kristy.zahn@stjohnsmayville.com



**INSTALLATION FOR PASTOR FRAZEE at Immanuel
LCMS Church, Courtland MN is July 5, 2026**

New address for the Frazee's:

50512 478th St. Courtland MN, 56021

Pastor Frazee Farewell

Now that I have been led by God to accept the call to serve as sole pastor at Immanuel Lutheran Church in Courtland, MN, I have the opportunity to contemplate my time here at St. John's with all of you. It has been (as it always will be) my joy and privilege to share God's Word with you, both His Law, but especially His Gospel, that we are saved by Jesus Christ alone. Saved from our sins—Jesus didn't "save our sins," (Religion class/catechesis students).

I was asked recently about what major things I could remember from my ministry here or, at least, during my ministry here. Here's what I came up with: the installation of an elevator, a new playground, and the new Youth and Child Care Center. It has also been my joy (and sometimes challenges) to spearhead our tech here at St. John's, especially the tech regarding worship. My thanks go out to all branches of our Tech Crew who have been with me since we started back in 2020 (and some even before that), who were instrumental in putting the hymns, Divine Services, and other major and regular components of our worship together through hours upon hours of typing them in. You are each truly appreciated! It was also the time we had to deal with all the Covid restrictions. Pastor Cutler and I tried to work through that situation faithfully, and I am certain that, while using different methods than us, the brother pastors in our circuit and our Synod were trying to do the same. Why am I certain of this? Because we share the faith of Abraham. We share the faith given to us at our baptism and through God's Word. It is a faith the Holy Spirit has given to us, because we cannot know or follow God of our own reason or strength. And the Holy Spirit has given each of us unique talents, gifts, and abilities in individual amounts, as He sees fit. Please use your talents, gifts, and abilities not just at work and at home but also serving each other and with each other at our church, school, and Child Care. We have been called into this "walk together" of faith (Synod literally means "walking together") so that we would be united in our faith in Jesus, not islands apart from one another. We are the body of Christ. Together. So we serve each other together. "Brother, let me be your servant."

This walking together flows from our faith in Jesus. I have strived over my time here to make it very apparent that we are not saved by our works (Sanctification → Justification) but rather that we love and serve *because* we have been saved by Jesus (Justification → Sanctification). Our works do not save us, yet we have the joy and privilege of serving our God by serving each other as our response to all that God has done for us in Christ Jesus. This is what Paul means about living sacrifices in Romans 12 and from Romans 12 to the end of his letter. But it's not just in Romans, it's throughout Paul's writings.

Let us master not just Law and Gospel, but also Sanctification with God the Holy Spirit as our Guide for the sake of Jesus Christ our Savior and Lord.

Striving along with you now and always,
Your brother and under-Shepherd in Christ,
Pastor Frazee

Thank you for all your love and support over the years!!! —Pastor, Anna, and Anthony



NEWS FROM SCHOOL

As we look ahead to our new school year under the theme "**Rooted in Christ**," we are reminded that healthy things grow because they have strong roots. A mighty oak tree can withstand storms, drought, wind, and changing seasons because its roots run deep beneath the surface. The same is true for us as Christians. In a world filled with distractions, uncertainty, and constant change, our strength does not come from our own abilities, accomplishments, or plans. It comes from being firmly rooted in Jesus Christ. When our faith is grounded in God's Word, nourished through worship, prayer, and fellowship, we develop a foundation that can withstand life's challenges. As Psalm 1:3 reminds us, the believer is *"like a tree planted by streams of water that yields its fruit in its season, and its leaf does not wither."*

For our students, being rooted in Christ means understanding that their identity is not found in grades, athletic achievements, popularity, or success, but in being beloved children of God. For our teachers and staff, it means remembering that our work is more than a job—it is a ministry. Every lesson taught, every conversation held, every act of patience shown is an opportunity to reflect Christ's love. For our families, being rooted in Christ means intentionally making faith a priority at home through prayer, worship, Scripture, and Christ-centered conversations. And for our congregation, it means continuing to support one another, encouraging spiritual growth, and serving as faithful examples of God's grace. Together, we become stronger when our lives are connected to the same source of life and strength—Jesus Himself.

Building a firm foundation requires intentional effort, but it is not something we do alone. God has called us together as one body, one ministry, and one family in Christ. We foster that foundation by worshiping together, studying God's Word, serving one another, encouraging each other in times of difficulty, and celebrating together in times of joy. Jesus Himself tells us in John 15:5, *"I am the vine; you are the branches. Whoever abides in Me and I in him, he it is that bears much fruit, for apart from Me you can do nothing."* As we look ahead to this next school year, may we commit ourselves to remaining firmly rooted in Christ. When our roots run deep in His promises, His forgiveness, and His love, we can face whatever lies ahead with confidence, knowing that God will continue to guide, strengthen, and grow us together for His glory.

Douglas Mageski

SJLS Principal

Dates:

July 27-30: VBS (at school)

August 10: Teachers return

August 14: SJLS Teachers CUW Summit

August 18: Middle School Open House (6 pm)

August 20: Lower Graders Open House (6 pm)

August 24: First Day of School

August 30: Teacher Dedication Sunday (8:00 am service)

Volunteer Skills Inventory

<https://form.jotform.com/261033836981057> We're excited to introduce a new way for families to get involved at St. John's! The School Board is creating a "task force" volunteer system for the 2026–2027 school year, allowing families to contribute their unique skills, interests, and expertise on specific projects - without the commitment of full-time board service. Whether you can lend a hand occasionally or more regularly, all time served on these task forces will count toward volunteer hours (if applicable). Your support plays a vital role in strengthening our school, church, and childcare ministry, and we truly value any time you are able to give.



**St. John's
Childcare Center**



St. John's Youth Center

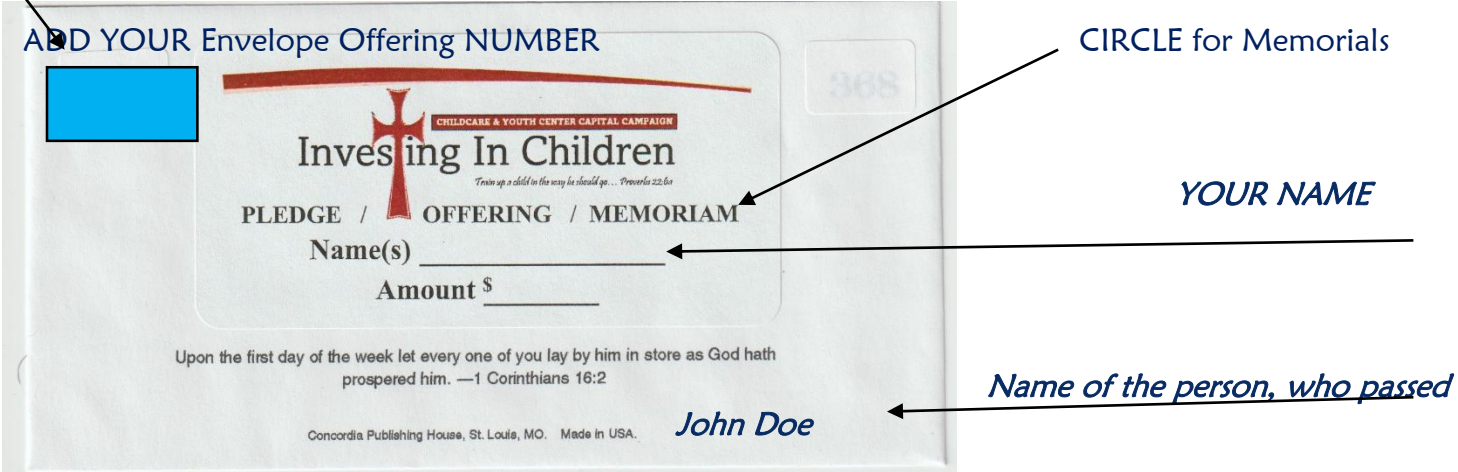
INVESTING IN CHILDREN
 Investing In Children Campaign.
 Totaled pledged **\$2,382,724.70** 173 units!
[This total does not include memorials. Pledged only!]
 Amounts received as of May 13, 2026
 Total Received ~ \$2,231,333.25
 Total from Pledges - \$2,142,753.27
 Memorials ~ \$75,597.00;
 Misc. (2024 & 2025 Rummage Sale, Round up,
 Dime Dump, TSB interest) \$12,982.98

Childcare / Youth Ministry Center Fund IS ALSO INVESTING

in CHILDREN! Please consider this in giving memorials or 'thanksgiving' gifting. Reminder in your offering envelope box are 'Investing In Children' envelopes; please feel free to use them when donating to the Childcare/Youth Center.

Please circle whether it is a Pledge, Offering or in Memoriam, include your offering number, name and amount. *Running out of those special envelopes? We have many more in the office, please ask for some.* PLEDGE OFFERING MEMORIAM

****When giving a MEMORIAL, YOUR NAME goes on the Name line, not the person that has passed. MEMORIAM**



Please note if giving your offering/pledge for the year and are getting checks from your financial establishments...they are TWO DIFFERENT FUNDS. The Investing Children Campaign pledges are a totally different entity then your offering statement. And we do not have the means to split the checks.

St. John's Open Funds:

St. John's Church St. John's School (Activity Fund)
St. John's School *Specified
St. John's School Scholarship
LWML (formerly Dorcas) Adopt a bill
LCMS High School Building Maintenance Fund
Living Trust Fund Altar Guild

Childcare / Youth Ministry Center Fund!

Please utilize the Childcare/Youth Envelopes in your box of envelopes. Circle if it is a memorial, pledge, or a donation and your offering number, name and amount given. *memorials – include the name of deceased on envelope bottom. YOUR NAME GOES ON THE NAME LINE.



If you have changed your address or have gone from a land line to a cell phone please let the church office know by either calling the church office at 387-3568, filling out the back of the communion card OR mailing a note to help keep our records up to date.



Parents—if your child is no longer living with you, please let the church office know so that updates to our computer system are kept up to date.

Please include in your phone / or some place that you are able to find the following numbers in case of an emergency:
St. John's Church: 920-387-3568
Pastor Mark Cutler 406-212-7374
pastor.cutler@stjohnsmayville.com

Dear Golfers, Sponsors, Donors and Volunteers,

On behalf of the St. John's Lutheran School Golf Outing Committee, thank you for helping make our 2026 Golf Outing such a tremendous success!

Thanks to your generosity and support, **we welcomed 104 golfers and raised nearly \$19,000 to support St. John's Lutheran School.** This incredible achievement would not have been possible without the dedication of our sponsors, donors, volunteers and golfers who continue to invest in our students and school community.

Whether you sponsored a hole, donated an auction or raffle item, volunteered your time, or spent the day golfing with us, your contribution played an important role in the success of this event. We are truly blessed by the support of our St. John's family and local businesses and community members who believe in our mission.

The funds raised will directly support school and athletic facility improvements, helping us continue to provide excellent opportunities for our students for years to come.

Thank you again for your generosity, partnership, and commitment to St. John's. We hope you enjoyed the day as much as we enjoyed hosting it, and look forward to seeing you again next year.

St. John's Lutheran School Golf Outing Committee, Kelly, Angela, Ann & Mehhan

ELECTRONIC GIVING (ACH) ~ ACH is a great way to automate your regular weekly offering. Electronic giving offers individual congregation members convenience and affords much needed offering consistency for our congregation. Please contact the church office for more information OR to sign up. Contributions can be taken out the first of the month or the fifteenth or BOTH.

No offering envelopes to remember! St. John's Ministry benefits tremendously from continued support, while you are away on vacation, or unable to attend worship. *Reminder ANY Changes to the ACH, must go through the church office for computing.

WWW-

The WORD, Women & wine Bible Class

Tuesdays, at 6:00pm

Locations change so please rsvp to 920-382-8748 for more information and location of classes. ... please call or text 920-382-8748 if you are joining us for location and for material purposes] Weekly topical class, join us when you can!



Informational 'periodical' email ~ to be informed on events and activities and / or important information, please make sure the church office has your email address; if you want to receive school updates please also add that to an email to barb.haessly@stjohnsmayville.com or write it on the back of a communion card. This is extremely helpful for 'closings', 'voter's meeting reminders', and other 'need to get out quick' information.

DO WE HAVE YOUR CURRENT INFORMATION?

We are always looking for your picture, cell phone, land line, marital status, address, email, etc. to keep us current. For changes or updates please email Barb in the office at Barb.Haessly@stjohnsmayville.com, or write the information on the back of a communion card and give to the usher.

St. John's Worship Opportunities

Saturday Spiritual Worship Service / Sunday "Traditional" Worship

WORSHIP HOURS ~

Saturday Praise & Worship Service at 5:30pm

Sunday Worship Service at Traditional Worship 8:15am
Contemporary 10:30am

Monday Evening Worship at 5:30pm

><> Bible Believers 9:30 (Parsonage) - <><

<>< Sunday Bible Class will be each Sunday from 9:30am-10:15am ><>

><> **BOLD**ED SERVICE WILL OFFER HOLY COMMUNION <><

Sat. July 4 **NO 5:30pm Praise & Worship Communion**
Board Member Installation at all services

Sun. July 5 8:15am Traditional Communion Worship Service
10:30am Contemporary Communion Worship

Mon. July 6 5:30pm Monday Evening Communion

Sat. July 11 5:30pm Praise & Worship Communion

Sun. July 12 **ONLY Service (no communion)**
9:30am Parking Lot Praises Bring your own chair for Worship
Outside weather permitting, [inclimate weather – fellowship hall]
Basement Brunch (Fellowship Hall), kids games, Bingo

Mon. July 13 5:30pm Monday Evening Communion

Sat. July 18 5:30pm Praise & Worship Communion

Sun July 19 8:15am Confirmation CommunionWorship Service
10:30am Contemporary Communion Worship

Mon. July 20 5:30pm Monday Evening Commuion

Sat. July 25 5:30pm Praise & Worship Communion

Sun. July 26 8:15am Traditional Communion Worship Service
10:30am Contemporary Communion Worship

Mon. July 27 5:30pm Monday Evening Communion

Saturday at 5:30pm; Sundays [8:15 & 10:30]; Mondays at 5:30pm

NOTE: OUR 8:15am Sunday Morning Service will
change to 8:00am starting on August 30, 2026.

Our WORSHIP SERVICE is available on
YouTube and Facebook.

The addresses are:

[St John's Lutheran Church LCMS, Mayville, WI | Mayville, WI](#)

[| Facebook](#)

and

<https://www.facebook.com/StJohnsEvLutheranChurch>



Sunday ~

9:30am--Bible Believers (Sunday School Program, at school) & Adult Bible Believer Class (Sept-May)

9:30am-Bible Class (Fellowship Hall)

Mondays ~ 7:30am "Learning How to Pray" in the choir room, led by Pastor Behnke (continues is Sept)

9:30-11-30am, Ladies Bible Class; Cutler's home for more information 406-212-7375 (Joann Cutler)

Tuesdays ~ 6:00pm WWW The WORD, Women and wine Ladies Bible Class (June - September.) text 920-382-8748 for class location, [traveling class]

Wednesdays ~

6:00am- PAP [Power at Prayer] (Fellowship Hall)

10:00am-"Bible Class" (Fellowship Hall)

JOYFUL JOURNEY ~

(Journey One Year for U Lord) Is a DAILY Bible reading, that gives you an Old Testament, New Testament, Psalm and Proverb reading.

The 'One Year Bible' is available in the church office for only \$15; or "the One Year Chronological Bible" is also available for the low cost of \$15.

Call a friend and take that daily walk together.

Your JOYFUL Journey will begin in Genesis and continue all the way through the Bible.

OR Daily Bible Readings can be picked up in the church office or in the Narthex for you to read cover to cover with only a few chapters at a time...

"Every Day" ~ One Year Bible / Chronological One Year Bible

St. John's Membership 827

10:00 am

PRAIRIE RIDGE CHAPEL July 13

PRAIRIE RIDGE COMMUNION July 27,

St. John's website is www.stjohnsmayville.com Visit the website to see current school and church activities and events. Parish Visitor Newsletters, Events Calendars, SCRIP forms... [if you prefer a printed version of the Parish Visitor, limited copies available in church office and the Narthex]



LWML "Women in Missions"

Who Are We - The Lutheran Women's Missionary League (LWML) with a membership of over 250,000 is the official women's organization of The Lutheran Church-Missouri Synod. The LWML focuses on **affirming each woman in her relationship with Christ** to enable her to be in **ministry** among the people of the world. For over 60 years the organization

has been encouraging and equipping women to live out their Christian lives in **active mission ministries and to financially support global missions.**

St. John's is part of the **South Wisconsin District**. The District is divided into groups called Zones, with about 6 churches each. Each church has a society organization that is affiliated with the LWML.

We participate in Spring and Fall Rallies and host on a rotation basis with the other churches in our Zone. The District hosts the Fall Retreat, Young Women's Retreat and SWD Convention.

WEB PAGE: (www.swd-lwml.org).

FOR MORE LWML INFORMATION check out the purple bulletin board in the Fellowship Hall



Challenge

- Fill a MITE BOX

You are encouraged to continue to 'fill a Mite box' all year through. The Mites collected from each of the LWML groups are used for many missions throughout the year.



Don't forget to grab a MITE BOX... find that spare, lost or extra change to help others through the MITE BOX Missions.

We would also "WELCOME" any new members to the LWML Dorcas Ladies. We meet on the 2nd Thursday of each month at 6:00 pm from September thru May. After a devotion, we discuss ongoing LWML activities in the area, as well as District and National Events. Please attend a meeting to see what the LWML Ladies are all about.

"GOD IS WITH YOU" *Have I not commanded you? Be strong and courageous. Do not be frightened, and do not be dismayed, for the Lord your God is with you wherever you go. Joshua 1:9*

LWML MEETING NIGHT ~ the 2nd THURSDAYS of the month at 6:00pm! (all women invited to attend, will resume in September.

SCHOOL KITS – We will once again be collecting spiral notebooks, pencils, black/blue pens (not gel pens), blunt tipped scissors, pencil sharpeners, pink erasers, 16 /24 ct. Crayons... keep this in mind as the Back to school shopping begins.

BOXED Greeting Cards ~ Sympathy, Birthdays, Anniversary, Wedding, Confirmation, Easter, Graduation, Thinking of You, ...\$5.00 in the church office. Buy 10 cards from either rack in office or fellowship hall and get 2 FREE...

RADA CUTLERY ~ available for purchase, (located in the Fellowship Hall) Made in the USA! Great gift ideas, for Showers, Birthdays, Christmas, EVERY DAY use! *Available through the Church Office or the Dorcas Society. (Sportsmen knives are also available!) GREAT ANYTIME GIFTS, including Shower gifts, Bingo prizes...

We encourage you to fill a Mite box whenever possible!

Birthday Blessings / Anniversary Celebrations

Birthdays are special days. Whether you are celebrating a milestone birthday or a regular good ole' birthday, each of us have been blessed with this special day, the day our Heavenly Father blessed your parents with YOU!

Why not honor your birthday age, with a gift to the church?

What an awesome statement of your faith, by thanking God through St. John's with a monetary gift.

These moments of celebration, are just that....

CELEBRATION of each person that God has shared with us.



Parking Lot Praises and Basement Brunch

Mark your calendar for something a bit different this year for

Sunday, July 12th at 9:30am,

[ONLY Sunday Service, NO COMMUNION]

St. John's will have a Fellowship Worship and

Basement Brunch. This will be a different yet familiar worship opportunity, instead of our outdoor worship service and picnic.

Bring your lawn chair for comfort, or utilize chairs from fellowship hall.

The back parking lot of church will be blocked off for worship.

In the event of inclement weather, worship will be in the fellowship hall.

The Salted Group will provide, egg bakes, ham, cheesy hash browns, granola, yogurt, coffee, juice,...

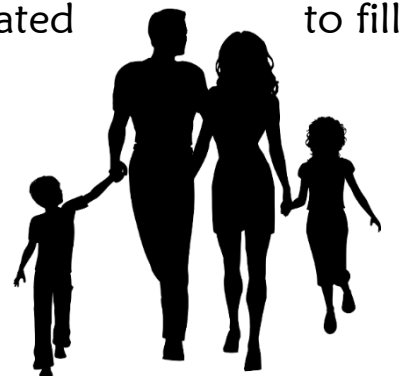
Donations of Fruit and Baked goods appreciated



Special thanks to all who supported the Baby bottle Campaign and those who donated the pack n' play to fill



Your support for the Pregnancy Center of Dodge County is greatly appreciated.



Join St. John's RaiseRight Scrip Program!

- It's Easy—Using gift cards to pay for everyday expenses is the easiest way to earn rebates to **SUPPORT CHURCH / DEFRAY TUITION.**
- It's Effective—Brands automatically give up to **20% of each gift card purchase back to you** through rebates. Earn rebates of \$1,000 or more per year. Family can help! Sign up aunts, grandparents etc.
- It's Flexible—With on-site purchases, eGift cards and a mobile app available, it can happen virtually anywhere, anytime.

Gas~Groceries~Travel~Coffee~Gifts~Home~Office~Hunting~Dining
Rebates on the go with the Raiseright App

How does it work? You buy gift cards..

You get the full value — no extra charge for cash or check orders.

Buy gift cards and eGift cards from **hundreds of popular brands and local businesses.**

The brand gives back..

A percentage of every gift card purchase goes back to you in the form of a rebate automatically.

Use the cards as payment..

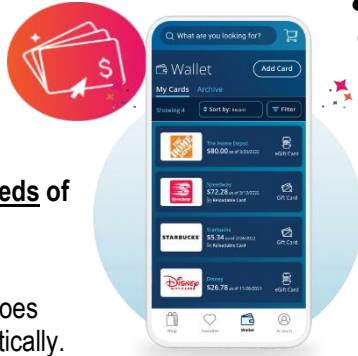
Pay for your everyday purchases with cards or e-scrip instead of cash or credit cards.

Rebates go toward..

The rebates are distributed to participating families as decided on their scrip agreement form:

- towards **next year's SCHOOL TUITION**
- as a **DONATION** to the church/school
- as a **CASH REBATE** to you

(Any combination of these options is available. All are encouraged to support St. John's mission of Reaching, Teaching, & Sharing the Gospel with a donation to the church/school.)



10% of rebates are kept in the scrip account to run the program.

January 2026 ~	Tuition \$955.05	St. John's \$ 688.17
February 2026 ~	Tuition \$797.42	St. John's \$ 791.66
March 2026 ~	Tuition \$975.62	St. John's \$ 727.32
April 2026 ~	Tuition \$ 950.52	St. John's \$1,065.93
May 2026 ~	Tuition \$1,522.09	St. John's \$1,005.42

- Shop for and purchase gift cards anywhere, anytime. Pay with connected checking account (29¢), debit card (1%)/credit card (3%).

- **Instantly access** your eGift cards & scan them at checkout while shopping, directly from your account Wallet.
- **Add funds** to reloadable gift cards anytime. Every time you add funds, you get a rebate!

Purchase Physical Gift Cards

- In the Church office M-Th 7 a.m. – 4 p.m. & some Friday mornings. Cash/Check accepted.
- Send an order and payment to school with your child. These are returned on Thursdays.
- Order non-stock items online, in app or in office by Thursday afternoon and they will be shipped to our program with our weekly order with a usual Tuesday arrival.

Get Started Today!

- **Fill out an Agreement Form** It tells us how to distribute your rebate. Pick up at church or school.
- **Join the Program** Come into the church office to purchase scrip and/or sign up at [RaiseRight.com/Enroll](https://www.raise-right.com/Enroll) with a secure account.

For more information including the enrollment code, contact our program coordinator: **Kathy Dobbratz**
MomD1964@gmail.com – 920-382-2816

ST. John's SCRIP PROGRAM is a continual fundraising program for St. John's Church! Has it been awhile since you bought any? Or have you never tried? Stop in the church office to see **HOW EASY IT REALLY IS!**



Prayer

OUR Homebound:
LaVern Gubin, Marie Pusateri,

We lift in prayer to our Heavenly Father the members of our St. John's family who have not worshiped or communed in the past months. May the Holy Spirit move them to return to His house to be spiritually fed through His Word and Body and Blood.



We pray for our St. John's family's members and all those who are serving our country in the military:

Timothy Behnke (Army), **Andrew Behnke** (Coast Guard), **Anthony Blum**, (Marines) **Ayden Juech** (Marines) and others who are in any branch of service.

We thank God for these men and women who willingly serve our Country.

Giving, Loving & Living

Are you or a loved one facing a difficult time: an illness, a death, loss of a job, or some other challenge in your life that is overwhelming?

Please call the church office at 387-3568 and make an appointment with Pastor Cutler or Pastor Frazee for them to offer encouragement, help with guidance and share in prayer.

We pray For:

We pray for strength and healing for those undergoing medical testing, procedures, treatments, those hospitalized, those recovering, and those with on-going health conditions

Those called HOME
We remember in our prayers the family and friends of



We welcome into our church family through the waters of Holy Baptism: June 13, 2026
Hayes Fredrick Balog, son of Morgan (Bushke) & Brent Balog



OUR MEMBERS LIVING IN OR RECOVERING AT NURSING OR ASSISTED LIVING FACILITIES:

- Clearview** – [198 County D F, Juneau] ~ Karen Liebenow,
- Hope Assisted Living** – [475 Grove St., Lomira] ~ Phyllis Ewert (201), Elinor Zahn (105), Jerry Barker (126) Gloria Rassmann (104), Barb Maas (122),
- Prairie Ridge**, [1175 Breckenridge St. Mayville] ~ Joyce Wucherer (25), Phyllis Mueller (6), Bill & Carolyn Muche (20), Dorothy Steinbach (5)
- New Perspective** – [2130 Continental Dr. West Bend] Betty Christian (139)
- Dale Rindfleisch** - [mailings for Dale c/o David Rindfleisch N53W35240 Lighthouse Ln. Oconomowoc, WI 53066]
- TO VISIT DALE – Riverside Lodge 420 N Main. St. #122 Dousman WI 53118
- Patriot Place** – 609 Broadway St. #40, Berlin, WI 54923 ~ Eunice Okon [mailings should go to W4318 Chappa Rd. Berlin WI]
- Adelaide Place** – 478 W. Arndt St, Fond du lac, WI 54935 #204 ~ Jeanine Streblow [mailings should go to c/o Deb Liegl, PO Box 368 Brownsville WI, 53006]

Prairie Ridge Chapel Service July 13 10:00am **Prairie Ridge Communion Service July 27 10:00am**

St. John's Membership 827 Communicant Members 715

St. John's MONTHLY Food Mission Focus for the MAYVILLE FOOD PANTRY
July ~ "Let's 'noodle' over this! Pasta, Noodles etc... & SCHOOL SUPPLIES"



OUR FOCUS EACH MONTH WILL BE DIRECTED TO 'IMMEDIATE NEEDS'

Donation Requests from the Mayville Food Pantry

*a goal is to reach 60 of each of the selected requested donations

WE DO ACCEPT ALL FOOD/HYGIENE ITEMS so please don't be deterred to continue to donate other items.

ALL OF IT IS APPRECIATED!

August ~ 'Yes, we CAN!' ANY canned food items...

September ~ 'BOX' it up! ANY boxed food items...

October ~ 'Spice it up with the baking STAPLES' Flour, Sugar, Salt, Spices, Pepper, Seasonings...

November ~ SMILE, 'YOU' look marvelous! Toothpaste, Mouthwash, Floss, Toothbrushes, Shampoo, Conditioner...

December ~ 'Baby, it's cold outside!' Kleenex, Potato Pouches, Rice/Noodle Packets, Boxed Stuffing, Soup...

Please note ALL food items are needed and appreciated through-out the year, the focus for the 'monthly' specialties are to aid the Mayville Food Pantry in helping to stock their shelves for those in need.

Please note ALL DONATIONS are appreciated through-out the year.

Ladies ~ Feminine Hygiene Products are appreciated.

Another help to the FOOD PANTRY: Hats, Mittens, Scarves, Gloves, Socks also collected.

HERE ARE VERY IMPORTANT "OTHER" ITEMS NEEDED FOR FOOD PANTRY, so please keep these also in mind:

MILK & BUTTER (there are lots of donations of Mac & Cheese, but milk and butter are also needed).

BOXED MILK (lots of donations of cereals, boxed milk is a treasure)

CANNED FOODS, should be popped topped or donate can openers for the other canned items.

OIL is a luxury

SPICES, SALT & PEPPER are a real gift

TEA BAGS & COFFEE are caring gifts

SUGAR & FLOUR are treats

TUNA & CRACKERS is a great lunch

Hamburger Helper goes nowhere without GROUND BEEF.

SANDWICH BREAD, (they get a lot of peanut butter & jelly but need something to put it on)

BUTTER and MARGERINE

EGGS are a commodity!

CAKE MIX & FROSTING makes it possible to make a child's birthday cake.

DISHWASHING DETERGENT is very expensive and always appreciated

STOVE TOP STOVING is always a favorite.

FEMININE HYGIENE PRODUCTS are a luxury

CASH makes it possible for the Food Bank to buy what's missing and buy in bulk.

YouCan MISSIONS Shoes for Belize

St. John's collects shoes: and a 'shoe' box

is located in the Fellowship Hall.

We appreciate your donations, please only drop off gently used / clean shoes, sandals, & footwear.

KEEP COLLECTING!

We take shoes all year long,

Container located in Fellowship Hall!



"YouCan" make a difference! Please consider donating new or gently used pairs of shoes for Belize.

The shoes will be distributed at schools and in villages in Belize by a mission team from this area who is partnering with local leaders there. Belize is a small,

developing country in Central America where shoes are very expensive and often a challenge to get. Any sturdy casual footwear appropriate for a tropical climate is accepted and would be greatly appreciated.

Tennis shoes and flip-flops for males (Toddler 12 – Men's Size 9) and females (Toddler 10 – Women's Size 7) are especially needed. As you're considering your donation, please understand it costs almost \$3 per pair to ship. Shoes should be in good

enough condition to make that investment worthwhile. If possible, please rubber band or tie shoelaces together. New, never been worn socks, and/or monetary donations to help cover shipping expenses are also welcome and encouraged for this effort. Please email

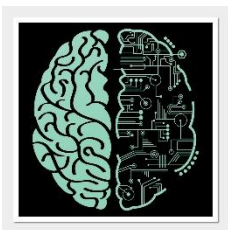
info@youcanmissions.org for more information. Be a part of this mission and spread the word!

Daily BIBLE READING

- | | | | | | | |
|---|--|--|--|--|---|---|
| <input type="checkbox"/> Jul 1: Ps 90-95 | <input type="checkbox"/> Jul 2: Ps 96-102 | <input type="checkbox"/> Jul 3: Ps 103-105 | <input type="checkbox"/> Jul 4: Ps 106-107 | <input type="checkbox"/> Jul 5: Ps 108-114 | <input type="checkbox"/> Jul 6: Ps 115-118 | <input type="checkbox"/> Jul 7: Ps 119:1-88 |
| <input type="checkbox"/> Jul 8: Ps 119:89-176 | <input type="checkbox"/> Jul 9: Ps 120-132 | <input type="checkbox"/> Jul 10: Ps 133-139 | <input type="checkbox"/> Jul 11: Ps 140-145 | <input type="checkbox"/> Jul 12: Ps 146-150 | <input type="checkbox"/> Jul 13: Prov 1-3 | <input type="checkbox"/> Jul 14: Prov 4-6 |
| <input type="checkbox"/> Jul 15: Prov 7-9 | <input type="checkbox"/> Jul 16: Prov 10-12 | <input type="checkbox"/> Jul 17: Prov 13-15 | <input type="checkbox"/> Jul 18: Prov 16-18 | <input type="checkbox"/> Jul 19: Prov 19-21 | <input type="checkbox"/> Jul 20: Prov 22-23 | <input type="checkbox"/> Jul 21: Prov 24-26 |
| <input type="checkbox"/> Jul 22: Prov 27-29 | <input type="checkbox"/> Jul 23: Prov 30-31 | <input type="checkbox"/> Jul 24: Ecc 1-4 | <input type="checkbox"/> Jul 25: Ecc 5-8 | <input type="checkbox"/> Jul 26: Ecc 9-12 | <input type="checkbox"/> Jul 27: Solomon 1-8 | <input type="checkbox"/> Jul 28: Is 1-4 |
| <input type="checkbox"/> Jul 29: Is 5-8 | <input type="checkbox"/> Jul 30: Is 9-12 | <input type="checkbox"/> Jul 31: Is 13-17 | | | | |
| <input type="checkbox"/> Aug 1: Is 18-22 | <input type="checkbox"/> Aug 2: Is 23-27 | <input type="checkbox"/> Aug 3: Is 28-30 | <input type="checkbox"/> Aug 4: Is 31-35 | <input type="checkbox"/> Aug 5: Is 36-41 | <input type="checkbox"/> Aug 6: Is 42-44 | <input type="checkbox"/> Aug 7: Is 45-48 |
| <input type="checkbox"/> Aug 8: Is 49-53 | <input type="checkbox"/> Aug 9: Is 54-58 | <input type="checkbox"/> Aug 10: Is 59-63 | <input type="checkbox"/> Aug 11: Is 64-66 | <input type="checkbox"/> Aug 12: Jer 1-3 | <input type="checkbox"/> Aug 13: Jer 4-6 | <input type="checkbox"/> Aug 14: Jer 7-9 |
| <input type="checkbox"/> Aug 15: Jer 10-13 | <input type="checkbox"/> Aug 16: Jer 14-17 | <input type="checkbox"/> Aug 17: Jer 18-22 | <input type="checkbox"/> Aug 18: Jer 23-25 | <input type="checkbox"/> Aug 19: Jer 26-29 | <input type="checkbox"/> Aug 20: Jer 30-31 | <input type="checkbox"/> Aug 21: Jer 32-34 |
| <input type="checkbox"/> Aug 22: Jer 35-37 | <input type="checkbox"/> Aug 23: Jer 38-41 | <input type="checkbox"/> Aug 24: Jer 42-45 | <input type="checkbox"/> Aug 25: Jer 46-48 | <input type="checkbox"/> Aug 26: Jer 49-50 | <input type="checkbox"/> Aug 27: Jer 51-52 | <input type="checkbox"/> Aug 28: Lam 1-3:36 |
| <input type="checkbox"/> Aug 29: Lam 3:37-5 | <input type="checkbox"/> Aug 30: Ezek 1-4 | <input type="checkbox"/> Aug 31: Ezek 5-8 | | | | |
| <input type="checkbox"/> Sep 1: Ezek 9-12 | <input type="checkbox"/> Sep 2: Ezek 13-15 | <input type="checkbox"/> Sep 3: Ezek 16-17 | <input type="checkbox"/> Sep 4: Ezek 18-20 | <input type="checkbox"/> Sep 5: Ezek 21-22 | <input type="checkbox"/> Sep 6: Ezek 23-24 | <input type="checkbox"/> Sep 7: Ezek 25-27 |
| <input type="checkbox"/> Sep 8: Ezek 28-30 | <input type="checkbox"/> Sep 9: Ezek 31-33 | <input type="checkbox"/> Sep 10: Ezek 34-36 | <input type="checkbox"/> Sep 11: Ezek 37-39 | <input type="checkbox"/> Sep 12: Ezek 40-42 | <input type="checkbox"/> Sep 13: Ezek 43-45 | <input type="checkbox"/> Sep 14: Ezek 46-48 |
| <input type="checkbox"/> Sep 15: Dan 1-3 | <input type="checkbox"/> Sep 16: Dan 4-6 | <input type="checkbox"/> Sep 17: Dan 7-9 | <input type="checkbox"/> Sep 18: Dan 10-12 | <input type="checkbox"/> Sep 19: Hos 1-7 | <input type="checkbox"/> Sep 20: Hos 8-14 | <input type="checkbox"/> Sep 21: Joel |
| <input type="checkbox"/> Sep 22: Amos 1-5 | <input type="checkbox"/> Sep 23: Amos 6-9 | <input type="checkbox"/> Sep 24: Oba-Jonah | <input type="checkbox"/> Sep 25: Micah 1-7 | <input type="checkbox"/> Sep 26: Nahum 1-3 | <input type="checkbox"/> Sep 27: Hab-Zeph | <input type="checkbox"/> Sep 28: Haggai 1-2 |
| <input type="checkbox"/> Sep 29: Zech 1-7 | <input type="checkbox"/> Sep 30: Zech 8-14 | | | | | |
| <input type="checkbox"/> Oct 1: Malachi 1-4 | <input type="checkbox"/> Oct 2: Matt 1-4 | <input type="checkbox"/> Oct 3: Matt 5-6 | <input type="checkbox"/> Oct 4: Matt 7-8 | <input type="checkbox"/> Oct 5: Matt 9-10 | <input type="checkbox"/> Oct 6: Matt 11-12 | <input type="checkbox"/> Oct 7: Matt 13-14 |
| <input type="checkbox"/> Oct 8: Matt 15-17 | <input type="checkbox"/> Oct 9: Matt 18-19 | <input type="checkbox"/> Oct 10: Matt 20-21 | <input type="checkbox"/> Oct 11: Matt 22-23 | <input type="checkbox"/> Oct 12: Matt 24-25 | <input type="checkbox"/> Oct 13: Matt 26 | <input type="checkbox"/> Oct 14: Matt 27-28 |
| <input type="checkbox"/> Oct 15: Mark 1-3 | <input type="checkbox"/> Oct 16: Mark 4-5 | <input type="checkbox"/> Oct 17: Mark 6-7 | <input type="checkbox"/> Oct 18: Mark 8-9 | <input type="checkbox"/> Oct 19: Mark 10-11 | <input type="checkbox"/> Oct 20: Mark 12-13 | <input type="checkbox"/> Oct 21: Mark 14 |
| <input type="checkbox"/> Oct 22: Mark 15-16 | <input type="checkbox"/> Oct 23: Luke 1 | <input type="checkbox"/> Oct 24: Luke 2-3 | <input type="checkbox"/> Oct 25: Luke 4-5 | <input type="checkbox"/> Oct 26: Luke 6-7 | <input type="checkbox"/> Oct 27: Luke 8-9 | <input type="checkbox"/> Oct 28: Luke 10-11 |
| <input type="checkbox"/> Oct 29: Luke 12-13 | <input type="checkbox"/> Oct 30: Luke 14-16 | <input type="checkbox"/> Oct 31: Luke 17-18 | | | | |
| <input type="checkbox"/> Nov 1: Luke 19-20 | <input type="checkbox"/> Nov 2: Luke 21-22 | <input type="checkbox"/> Nov 3: Luke 23-24 | <input type="checkbox"/> Nov 4: John 1-2 | <input type="checkbox"/> Nov 5: John 3-4 | <input type="checkbox"/> Nov 6: John 5-6 | <input type="checkbox"/> Nov 7: John 7-8 |
| <input type="checkbox"/> Nov 8: John 9-10 | <input type="checkbox"/> Nov 9: John 11-12 | <input type="checkbox"/> Nov 10: John 13-15 | <input type="checkbox"/> Nov 11: John 16-18 | <input type="checkbox"/> Nov 12: John 19-21 | <input type="checkbox"/> Nov 13: Acts 1-3 | <input type="checkbox"/> Nov 14: Acts 4-6 |
| <input type="checkbox"/> Nov 15: Acts 7-8 | <input type="checkbox"/> Nov 16: Acts 9-10 | <input type="checkbox"/> Nov 17: Acts 11-13 | <input type="checkbox"/> Nov 18: Acts 14-15 | <input type="checkbox"/> Nov 19: Acts 16-17 | <input type="checkbox"/> Nov 20: Acts 18-20 | <input type="checkbox"/> Nov 21: Acts 21-23 |
| <input type="checkbox"/> Nov 22: Acts 24-26 | <input type="checkbox"/> Nov 23: Acts 27-28 | <input type="checkbox"/> Nov 24: Rom 1-3 | <input type="checkbox"/> Nov 25: Rom 4-7 | <input type="checkbox"/> Nov 26: Rom 8-10 | <input type="checkbox"/> Nov 27: Rom 11-13 | <input type="checkbox"/> Nov 28: Rom 14-16 |
| <input type="checkbox"/> Nov 29: 1Cor 1-4 | <input type="checkbox"/> Nov 30: 1Cor 5-8 | | | | | |
| <input type="checkbox"/> Dec 1: 1Cor 9-11 | <input type="checkbox"/> Dec 2: 1Cor 12-14 | <input type="checkbox"/> Dec 3: 1Cor 15-16 | <input type="checkbox"/> Dec 4: 2Cor 1-4 | <input type="checkbox"/> Dec 5: 2Cor 5-9 | <input type="checkbox"/> Dec 6: 2Cor 10-13 | |
| <input type="checkbox"/> Dec 7: Gal 1-3 | <input type="checkbox"/> Dec 8: Gal 4-6 | <input type="checkbox"/> Dec 9: Eph 1-3 | <input type="checkbox"/> Dec 10: Eph 4-6 | <input type="checkbox"/> Dec 11: Philippians 1-4 | <input type="checkbox"/> Dec 12: Colossians 1-4 | |
| <input type="checkbox"/> Dec 13: 1 Thess 1-5 | <input type="checkbox"/> Dec 14: 2 Thess 1-3 | <input type="checkbox"/> Dec 15: 1 Timothy 1-6 | <input type="checkbox"/> Dec 16: 2 Timothy 1-4 | <input type="checkbox"/> Dec 17: Titus-Philemon | <input type="checkbox"/> Dec 18: Heb 1-6 | |
| <input type="checkbox"/> Dec 19: Heb 7-10 | <input type="checkbox"/> Dec 20: Heb 11-13 | <input type="checkbox"/> Dec 21: James 1-5 | <input type="checkbox"/> Dec 22: 1 Peter 1-5 | <input type="checkbox"/> Dec 23: 2 Peter 1-3 | <input type="checkbox"/> Dec 24: 1 John 1-5 | |
| <input type="checkbox"/> Dec 25: 2John-Jude | <input type="checkbox"/> Dec 26: Rev 1-3 | <input type="checkbox"/> Dec 27: Rev 4-8 | <input type="checkbox"/> Dec 28: Rev 9-12 | <input type="checkbox"/> Dec 29: Rev 13-16 | <input type="checkbox"/> Dec 30: Rev 17-19 | |

As we transition into this next chapter without Pastor Frazee's technical assistance we ask for your grace on our services as we finagle things.

IF YOU ARE TECH MINDED, we truly would appreciate your help with our video, power point, posting ministry; including IN-HOUSE help if the moment would arise.



St. John's Adopt a Bill Program ~ OVER \$ 241,003.30



(since Nov. 2004) What IS St. John's Adopt a bill program? And how does it work? In the Narthex on the wall, we have our 'Adopt-a-bill' Program with the graphics of Noah's ark, and helping "St. John's 'keep afloat'". On the wall are miscellaneous bills that can be 'adopted' by those who would like to help out with some of our bills not necessarily covered by our 'ministry financial plan'. Most (if not all) of the bills to be 'adopted' are less than \$100. There are 'adopt-a-bill' envelopes to put your name, envelope number and selected bill and payment into. [bills 'adopted' will then be credited to your offering statement under 'adopt-a-bill']. Checks should be made out to St. John's Church [not to the recipient on the bill]; cash is also welcomed.

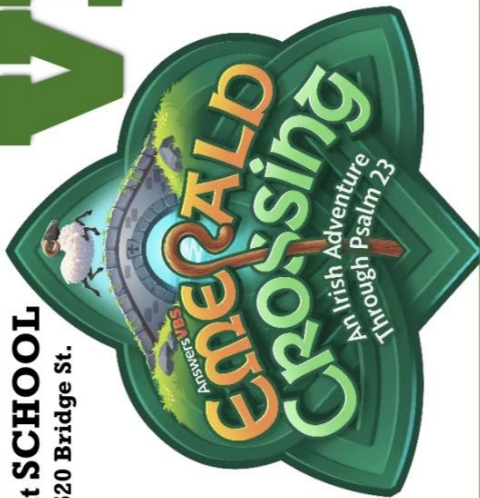
Our 'adopt-a-bill' program was started in 2004 and since then we have over **\$241,000.00** of donations credited to miscellaneous bills.

January 2026 ~ \$593.09 February ~ \$218.00
 March 2026 ~ \$519.49 April ~ \$1,067.12
 May 2026 ~ \$341.12

FAMILIES with school aged children ~ Please make sure the church office has YOUR CHILD'S information, including SCHOOL, GRADE ETC... This helps up keep current with ministry activities such as 3rd Grade Bibles, Confirmation Classes etc...

EVERYONE WELCOME!
VBS
FREE
 Age-based activities for age 2-6th grade.

Games, Snacks, Crafts, Music, Experiments, Bible Lessons + Separate Toddler Activities



New Location at **SCHOOL** 520 Bridge St.

July 27-30, 2026
Monday-Thursday 5:30-7:30 p.m.
FREE Light Meal Served 5:00-5:30

Learn about the Good Shepherd! Walk-ins welcome! (Parent asked to be on site for 4 yrs and less – all guardians welcome)

REGISTER ONLINE



Call to register 920-387-3568 or

drop off at **ST. JOHN'S** church
450 BRIDGE ST., MAYVILLE

Cut Here and

Retain Top Portion For Your Information

ADULT: _____
 ADULT: _____
 CHILD: _____ AGE _____ GRADE FINISHED _____
 CHILD: _____ AGE _____ GRADE FINISHED _____
 CHILD: _____ AGE _____ GRADE FINISHED _____
 Address: _____
 Phone: _____
 Email: _____
 Allergies/Comments _____
 Do You Have A Home Church? Y ___ N ___
 Name of Church _____



St. John's Lutheran Church
450 Bridge Street
Mayville, WI 53050

July Memory Verse:

“Teach me your way, O LORD, that I may walk in your truth; unite my heart to fear your name.” Psalm 89:11



Phone: 920-387-3568
Fax: 920-387-2852
www.stjohnsmayville.com

“Reaching, Teaching, and Sharing the Gospel”

**St. John's Lutheran Ministries:
Church, School,
Childcare & Youth**

**THERE IS NO SATURDAY
WORSHIP SERVICE ON
JULY 4 at 5:30pm**

**SUNDAY JULY 12th at
9:30am ONE SERVICE
ONLY! No Communion...
join us for Parking Lot
Praises and basement
breakfast brunch, games,
Bingo...**

Church Office Hours

Monday-Thursday 7:00am– 4:00pm;
FRIDAY 7:00-11:00 am

[to avoid any inconvenience and to better serve you
call ahead 387-3568

[If you need assistance, after posted hours please call
387-3568 so arrangements can be made]

No SCRIP FRIDAY, July 3, 10, 17, 24 & 31

**The Church Office will be CLOSED
on Friday July 3rd!**

[NO JULY 4th Saturday, Worship Service]

